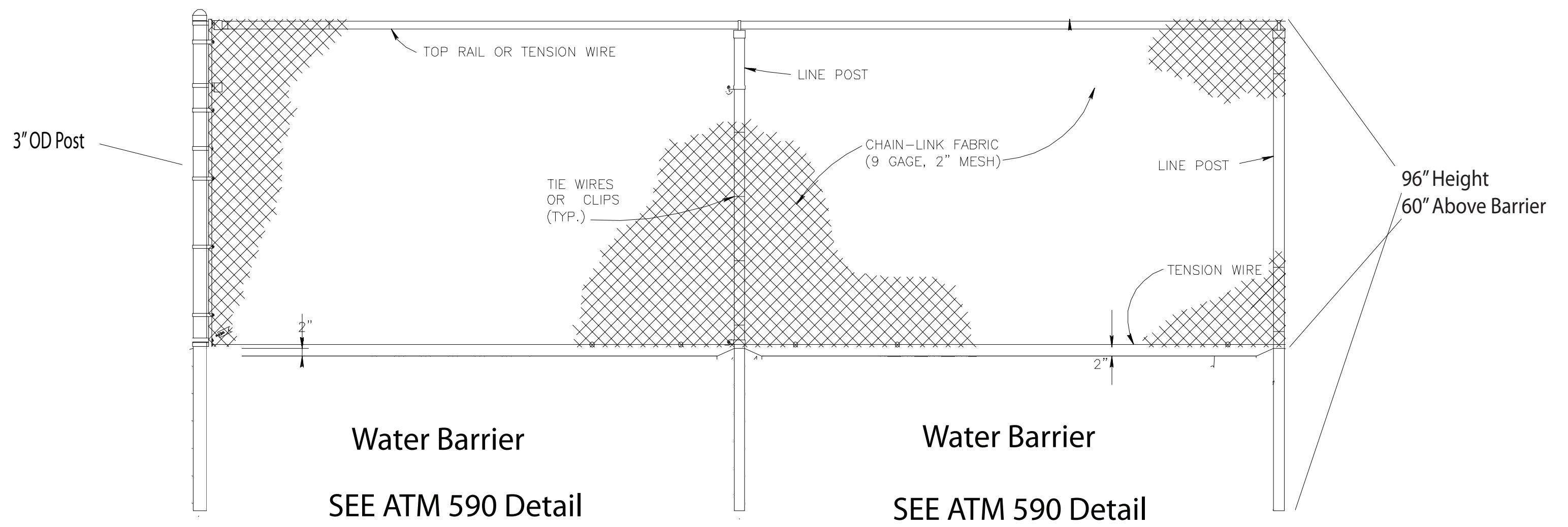
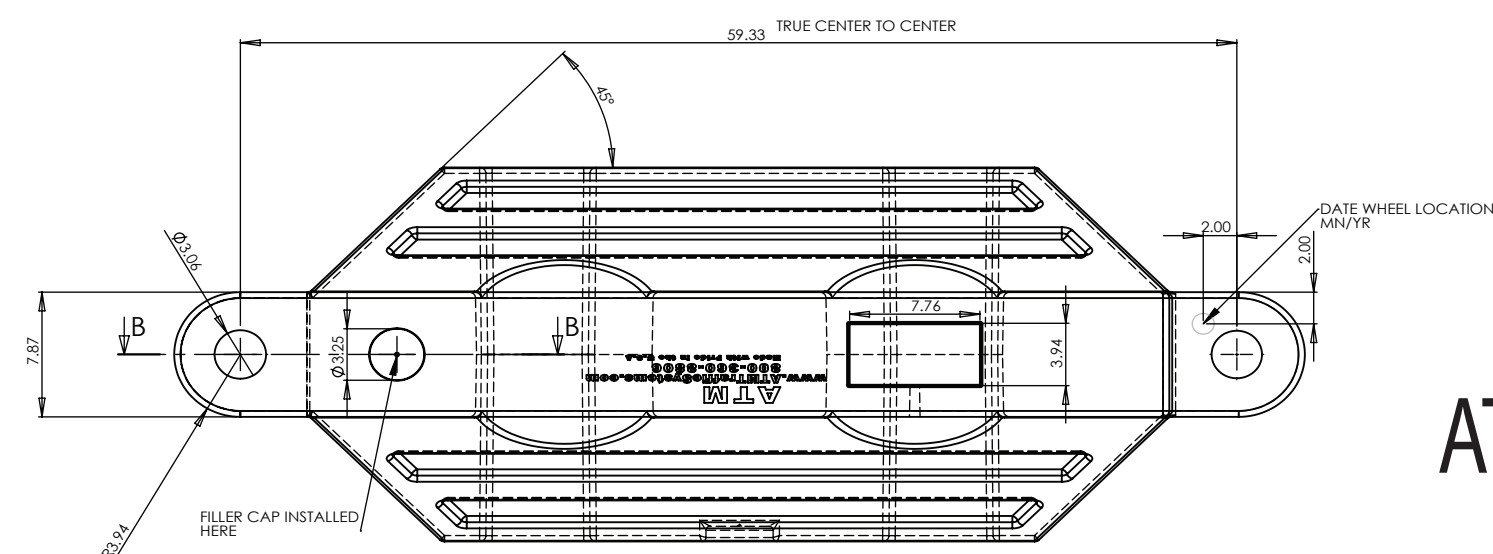
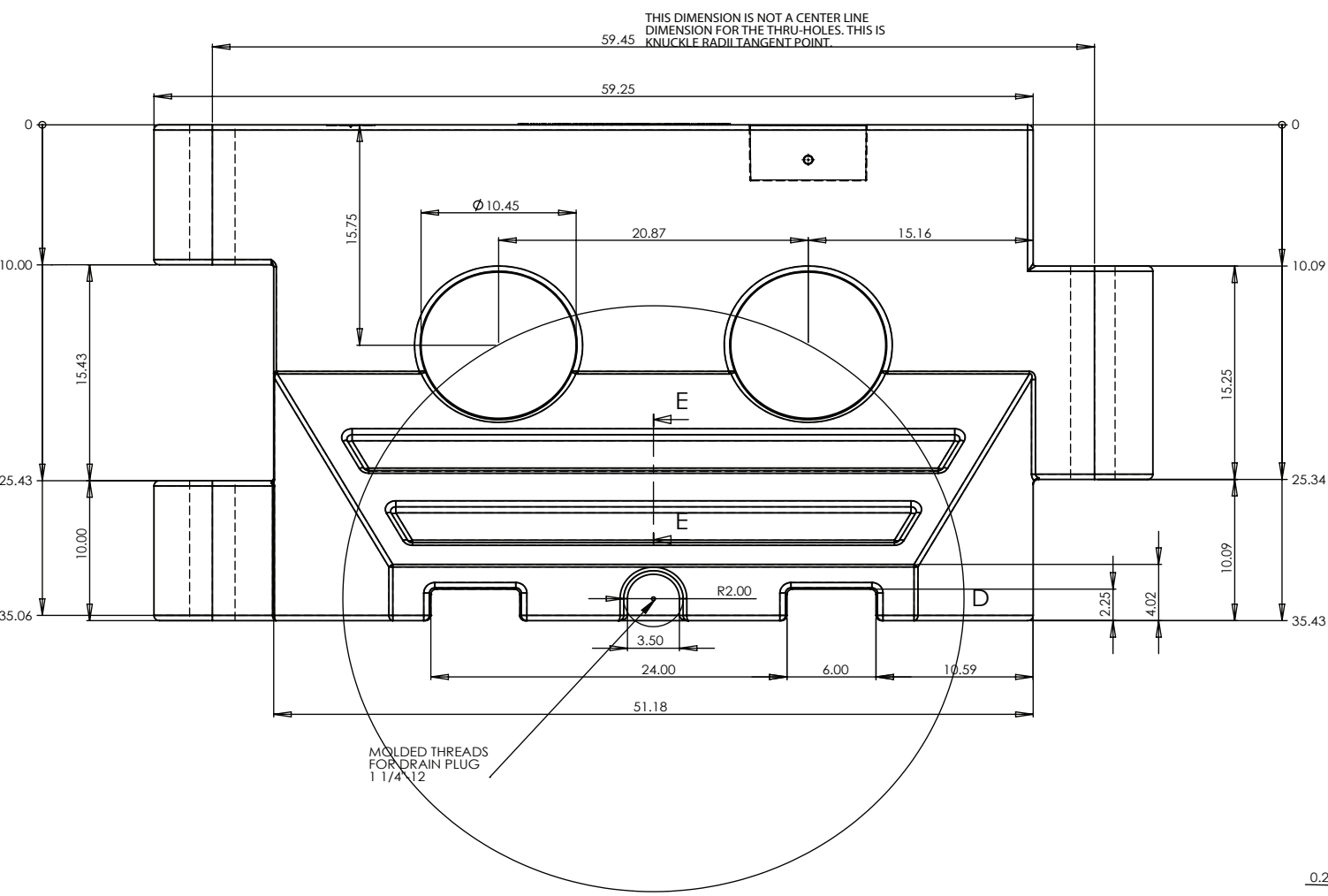


NOTES:

1. DETAILS SHOWN ARE TO CLARIFY REQUIREMENTS AND ARE NOT INTENDED TO LIMIT OTHER TYPES OF FENCE SECTIONS AND METHODS OF INSTALLATION.
2. WIRE TIES, RAILS, POSTS, AND BRACES SHALL BE CONSTRUCTED ON THE SECURE SIDE THE FENCE ALIGNMENT.

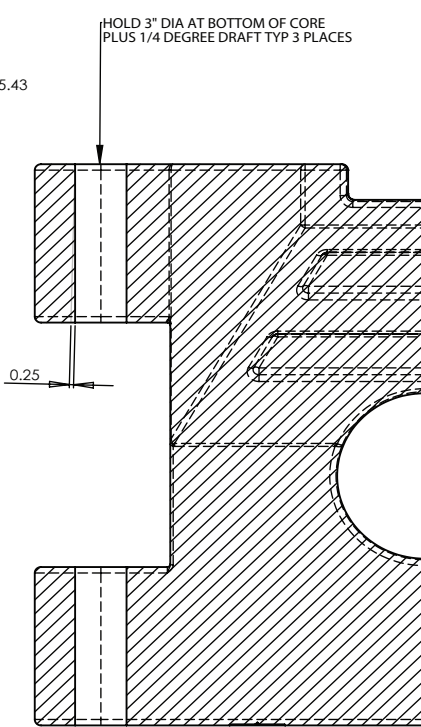
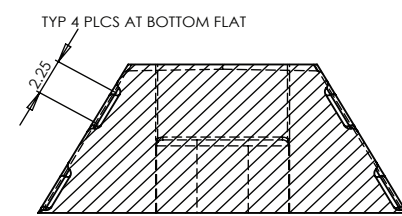


Water Barrier
SEE ATM 590 Detail

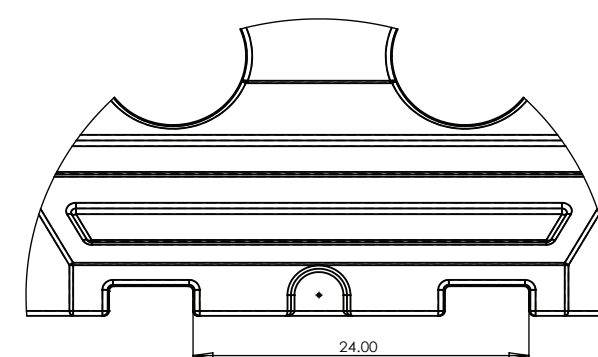
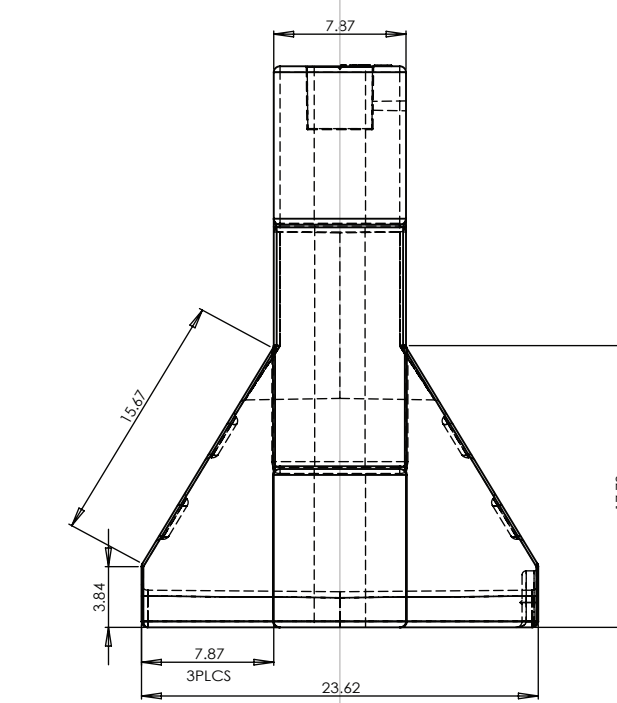
Water Barrier
SEE ATM 590 Detail

ATM 590 CHAIN-LINK SECURITY FENCE DETAIL

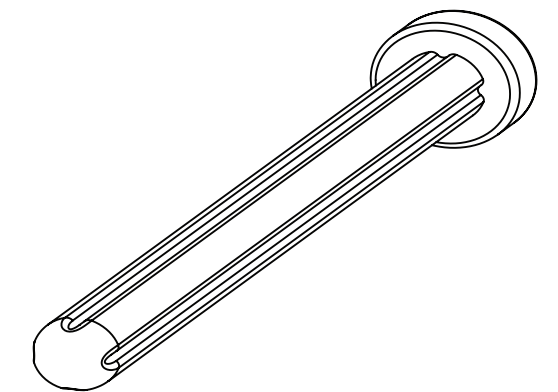
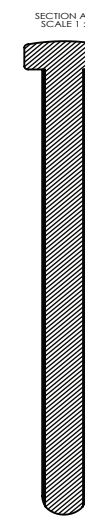
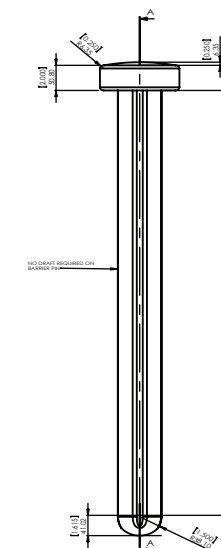
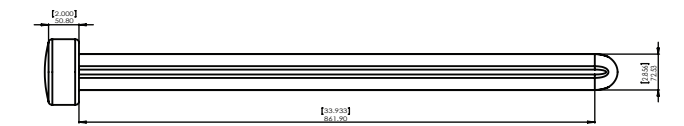
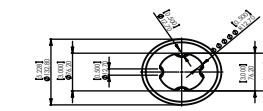
NO SCALE



SECTION B-B



DETAIL D
SCALE 1 : 6
REV 2 SHOWING TRUE CENTER TO CENTER DIMENSIONS OF FORK THRU-HOLES



Optional Pin
When No Fence
Is Required

Notes: SS20 Hot Dipped Galvanized
Fence Posts

Zinc Coated Steel Chain Link Fence
Class 1-1.2 OZ/FT² (366 g/m²)

ATM 590 Water Barrier Detail

Drawing rev 1
ATM 590 Water Barrier and Fence Detail
1/31/2012
John M. Sandy

Transportation Supply LLC
1401 Lavaca Street #40, Austin, TX 78701
(866) 930-4604 | sales@trans-supply.com | www.trans-supply.com