



MB42x72JSS LCD



LCDs are described as lightweight, deformable devices that can be connected together to delineate or channelize vehicles or pedestrians.

Longitudinal Channelizing Device

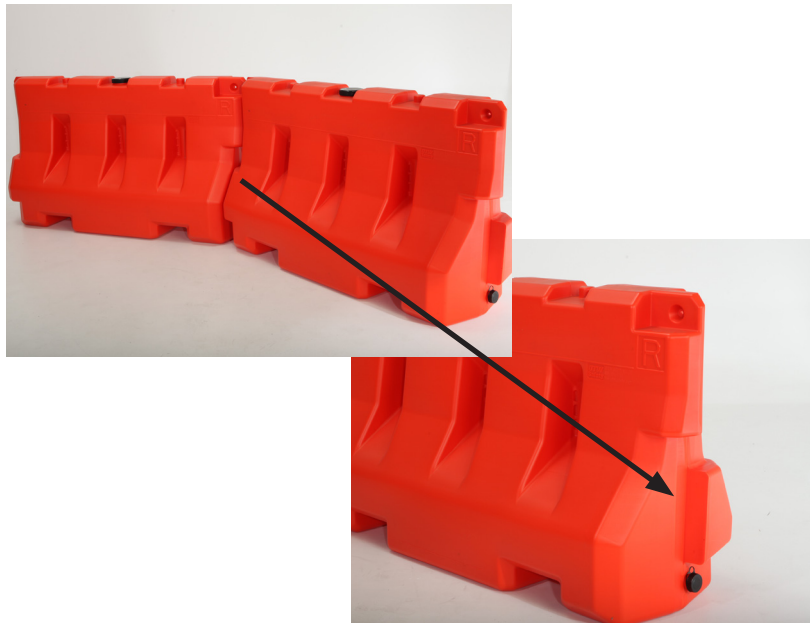


Optional fence pannel for extra security.



Official Barricade of the Gymkhana Grid.

The MB42x72JSS LCD is accepted by FHWA as a Longitudinal Channelizing Device at TL3. This barricade will fill the gap between deadly concrete barriers and insufficient cones and drums.



Tabs keep barricades interlocked.



Secure perimeter at the Dew Tour.

Features & Benefits

- NCHRP-350 crash tested and accepted at TL3 (suitable for high speed work zones). Federal acceptance letter WZ-277
- Barricades can hold battery-operated or solar safety lights.
- Water is filled through a topside aperture and emptied by removing a plug at the base.
- Requires no additional hardware or parts.
- Forms and interlocking wall in any configuration.
- Due to their visibility and imposing nature, drivers respect these devices which provide visual delineation by forming a wall.
- Clearly delineates work zones at night and in bad weather.
- Barricades are not damaged by freezing conditions. If water freezes, plastic will expand.
- Barricades are engineered to withstand winds in excess of 100 mph.

COLORS:

Safety Orange

COMPOSITION:

High impact, UV resistant, high density polyethylene

SIZE:

Height: 42" / 106.6 cm

Length: 72" / 182.8 cm

Width: 24" / 60.96 cm

Wall: .20" / 5.08 mm

WEIGHT:

Empty: 80 lbs. 40.8 kg

10 gallons of water: 169 lbs / 76.6 kg

Full (150 gal): 1305 lbs / 591.9 kg

Useful Life: Minimum 8 years on Average



Transportation Supply

1401 Lavaca Street #40

Austin, TX 78701

Phone: (866) 930-4604

Email: sales@trans-supply.com

www.trans-supply.com