



# TRANSUPPLY

Transportation Supply LLC | 1401 Lavaca Street #40, Austin, TX 78701  
(866) 930-4604 | [sales@trans-supply.com](mailto:sales@trans-supply.com) | [www.trans-supply.com](http://www.trans-supply.com)



What's On the Inside Counts...



# One Soft Wall Does It All

## WHY?

The Sentry Water-Cable Barrier has been tested and accepted for all TL-1, TL-2 and TL-3 lightweight 1,807 lbs (820 kg) and heavyweight 4,409 lbs (2,000 kg) vehicle impacts at 45 mph (70 kph) and 62.5 mph (100 kph) impacts. Sentry can do any job, without the addition of external steel or extra parts, where water barrier is specified.

## HOW?

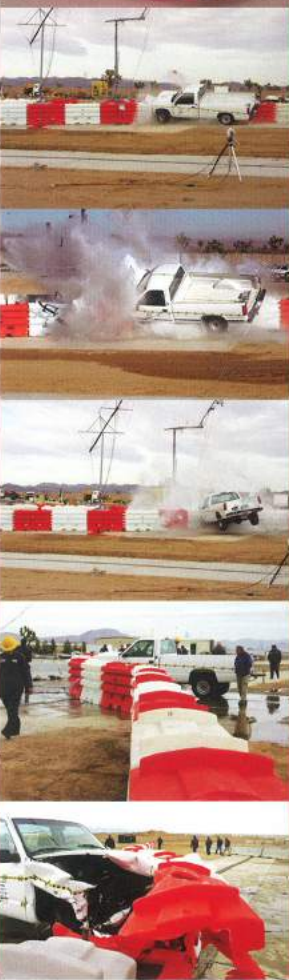
Sentry Water-Cable Barrier allows for the creation of a free standing continuous longitudinal water-cable barrier. Each Sentry wall section has four integrally molded corrosion resistant steel cables and eight bushings connecting the barrier sections to prevent vehicle breaching. Weighing 2,000 lbs (907 kg) when filled, the Sentry Water-Cable Barrier softly absorbs the impacting vehicles energy progressively using water, and the steel cables to capture the vehicle without redirection, avoiding a secondary incident.

## RESULT!

Errant vehicle is...

Prevented from entering the work zone,  
Captured and not redirected into traffic,  
Safely controlled and stopped,

Increasing the survival rate of occupants and workers!





# What's On The Inside Counts

## FEATURES

- Interlocking knuckle design allows for positive connection linking each wall with a galvanized steel T-pin while still maintaining up to a 15 degree rotation between sections.
- Durable Polyethylene plastic minimizes cracking and breaking during handling & transport.
- Three (3) Longitudinal Saw Tooth Anti-Vehicle Climbing Rails are integrally molded into each side.
- Stacking lugs on top and bottom make storage and transport quick and easy.
- Fork lift through holes and pallet jack slots make movement and placement effortless.
- Large 8 in (20.32 cm) diameter fill hole and quick release twist-lock plastic cover speed up the filling process.
- Tamper resistant Quick Out drain plug screws out in only 1.5 turns.

## TEST QUALIFICATIONS:

- 1.) NCHRP 350: TL-1, TL-2 & TL-3  
Longitudinal Barrier
- 2.) NCHRP 350: TL-1, TL-2 & TL-3  
Longitudinal Device

## DEFLECTION VALUES:

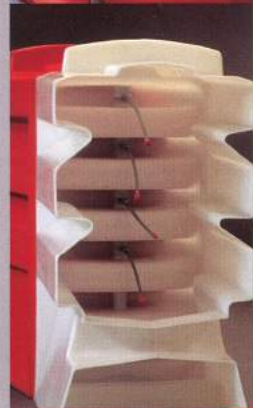
4,409 lb (2,000 kg) vehicle, 25 degree Impact Angle

TL-2 45 mph (70 kph) 5.9 feet (1.80 m)

TL-3 62.5 mph (100 kph) 9.0 feet (2.74 m)

## SPECIFICATIONS

Length	76 inches /193 cm
Height	43 inches/109 cm
Width	22 inches/56 cm
Weight (empty)	160 lbs/73 kg
Weight (filled)	2,000 lbs/907 kg
Material	Polyethylene
Colors	Orange or White





# TRANSUPPLY

**Transportation Supply LLC** | 1401 Lavaca Street #40, Austin, TX 78701  
(866) 930-4604 | [sales@trans-supply.com](mailto:sales@trans-supply.com) | [www.trans-supply.com](http://www.trans-supply.com)